

# BUDGET SHEET

You have \$75.00 to spend on your newly purchased land for a community garden. Visit a plant nursery website to purchase plants for your very own community garden. After you purchase your items sketch out where you will plant the items.

ITEM	WEBSITE	COST	QUANTITY	TOTAL

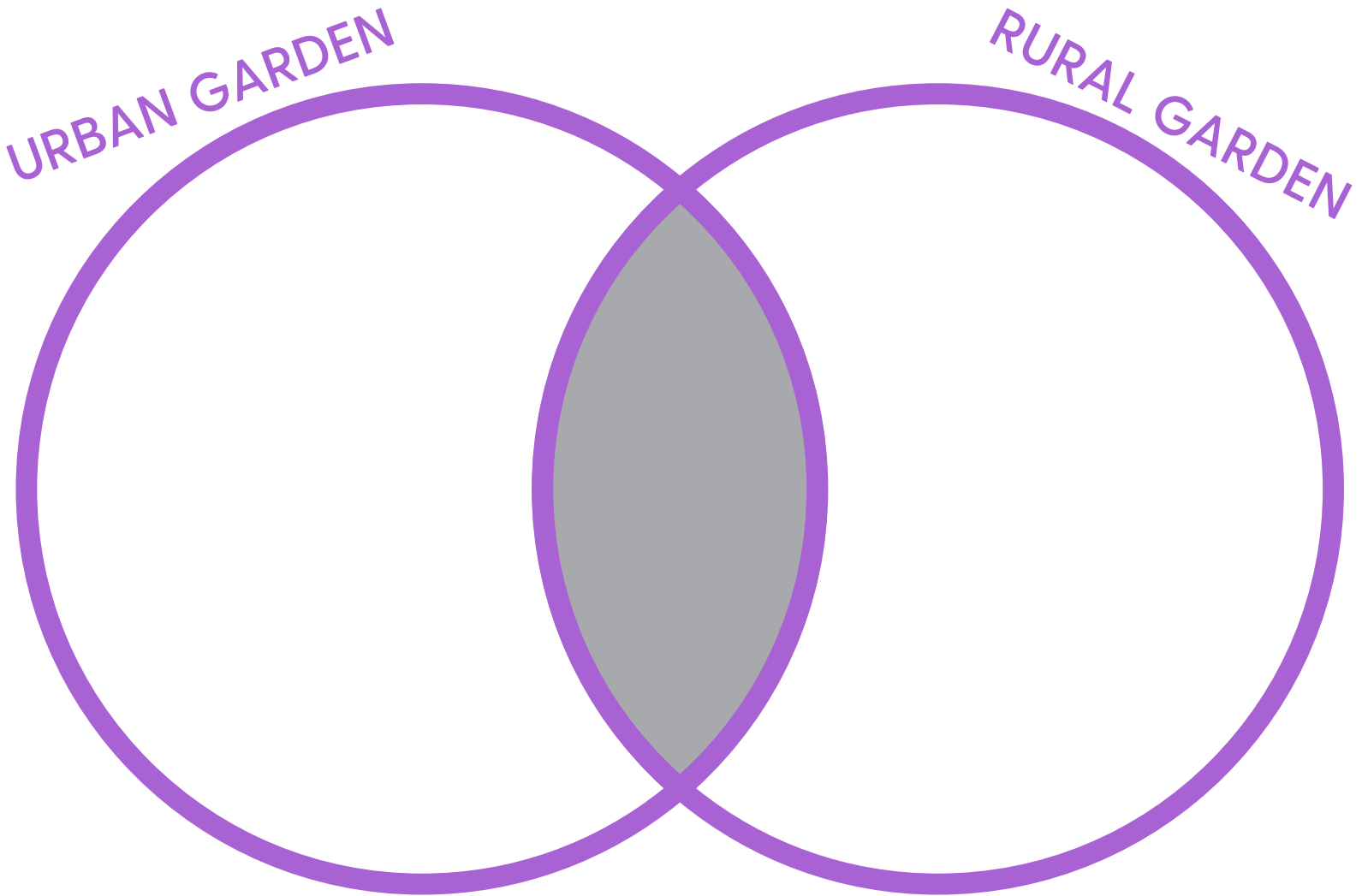
# COMMUNITY GARDEN DRAWING

Draw your own community garden. Label your plant areas.



# COMPARING GARDENS

Compare a rural garden to an urban garden. What do they have that is the same? What is Different?



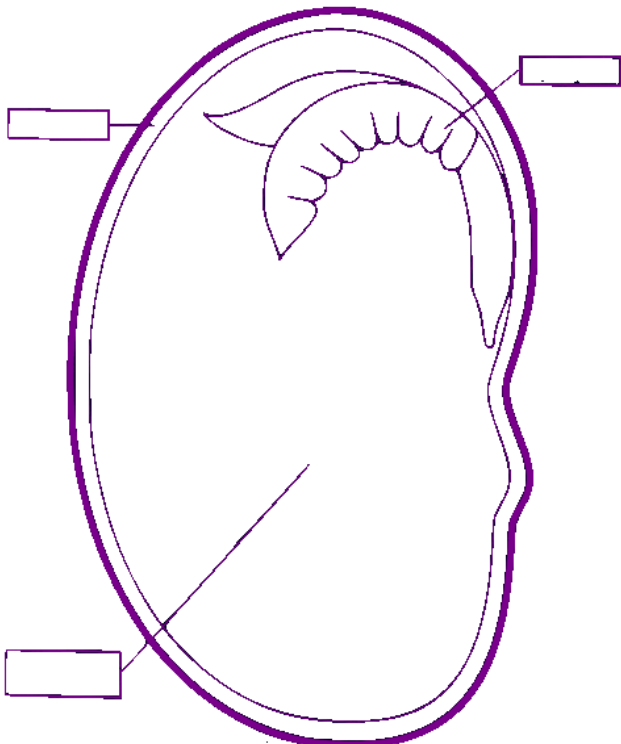
# PARTS OF A SEED

## Reading About Science!

A seed is the part of a seed plant that grows into a new plant. A seed includes three parts: (1) an embryo, (2) a supply of nutrients for the embryo which is the food source, and (3) a seed coat. There are many different kinds of seeds. Some plants make a lot of seeds, some make only a few. Seeds are hard and small, but some are larger. Can you think of the different types of seeds you see every day? Think about the last time you ate an apple, what type of seed did you see? Think about a time you ate a peach, was that seed larger or smaller than an apple seed?

A seed does not move by itself, but it is a tiny living thing. A plant does not need the nutrients in soil for a few days or weeks, because the seed has all the things it needs to grow. After a few days, it will begin to need sunlight. If there is sunlight, the plant will use it to grow. Seeds are the beginnings of a new plant. The purpose of a seed is to reproduce. Just think about it, when you plant it...it creates another plant! Seeds lie dormant until they receive the things they need to grow, such as the right amount of soil, water and sunlight. This process is called germination. All seeds are different and require different conditions to germinate and grow properly.

Label the parts of a seed using the word bank below.



### WORD BANK

Seed Coat

Embryo

Food Source